

Using the TradeStation Scanner to find "Pinball" Setups

Introduction

The "pinball setup" is a chart pattern described by Rick Saddler in his Hit & Run Candlesticks group.
[<http://www.hitandruncandlesticks.com>]



The chart above shows the basic "pinball setup" that is desired. It consists of a period of downward price movement, with price below the 8ema, followed by an upward movement crossing above the 8ema. (ema = exponential moving average).

The vertical distance from the 8ema up to the 34ema should be sufficient to create a useful profit -- usually a move of 10% to 15% of the current price is desirable.

In the "w2jc Pinball Scan" all the specific conditions are included, such as the relationships between the various moving averages, the price trend direction, etc. When all the conditions are met, the ticker will appear in the scan results.

Rick Saddler named this chart pattern the "Pinball" setup because the pattern gives a high probability that the price will move UP to the 34ema, then bounce back down to the 8ema, and then perhaps bounce back UP through the 34ema -- similar to the way a pinball bounces around in the old pinball games like the one shown above!

When a Pinball Setup is detected, the position can be opened with a BUY between the 8ema and the 11ema; the target can



be set immediately to just under the 34ema, and the stop can be set based on the chart pattern and your "money management" rules.

At left is the same chart as shown above, with an open position shown on the chart.

Entry is just above the 8ema; the target is set just under the 34ema (orange), and the stop (for now) is set just below the low wick of the July 12 doji. If the price then moves

up toward the 34ema as expected, the stop level can be moved up each day to reduce the loss risk amount.

The Scanner

The "w2jc Pinball Finder" scanner consists of two major parts:

- Conditions set up in the Tradestation Scanner for moving averages
 - An EZ-Language code that detects the actual Pinball conditions
- [Note: Version 1.1 has EZ-Language code which also shows Pinball Condition on the Tradestation charts. This will be described in a later section of this User Guide. The same code is used for the chart and for the scanner.]

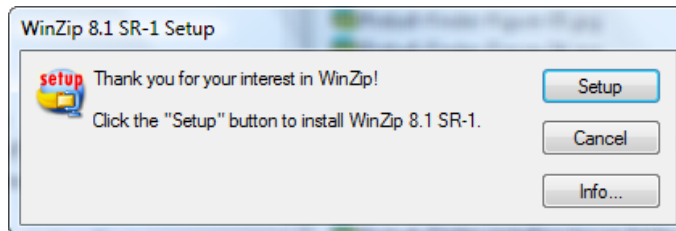
The "w2jc Pinball Finder" scanner is delivered using one .ZIP file, which contains four files. Three of the files contain the scanner setup, and the fourth file (an .ELD file) contains the EZ-Language code for import into Tradestation. (The .ELD file is coded for your specific TS customer ID number, and can be used from any computer but only when you log into your TS account.) An additional file (**winzip81.exe**) is included from which you can install the WinZip utility if you do not already have it on your computer [it is used to open the .ZIP file mentioned above.]

Installation

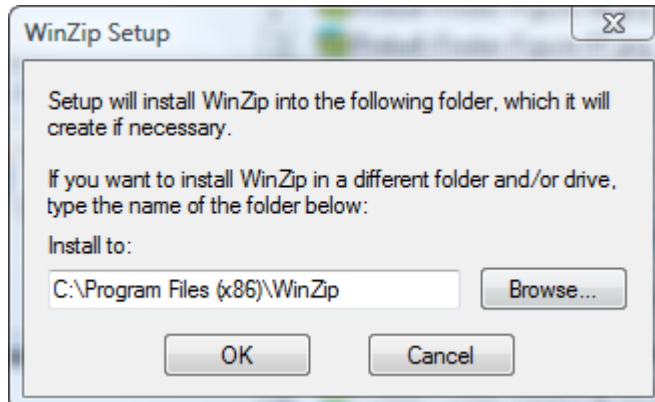
- ❖ If you do not already have WinZip installed on your computer, install it now.

[We encourage you to use WinZip to install the w2jc Pinball Scanner because all of our instructions in the following sections use WinZip screen shots as examples, and we have found that users who try to use other Zip extractors have difficulty following the installation instructions correctly.]

- Save the **winzip81.exe** to your hard drive.
- Left double-click on the **winzip81.exe** filename to open the install file.

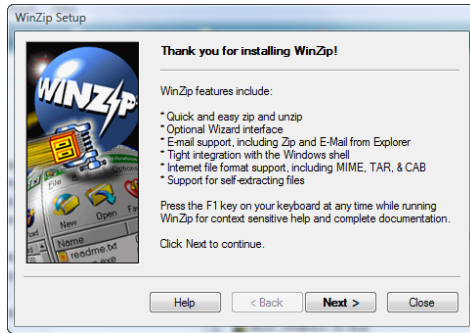


- Left-click on the [Setup] button.



- If you prefer to install in a different folder, use [Browse] to select that target folder. Then click [OK].

- The setup should start with this window:



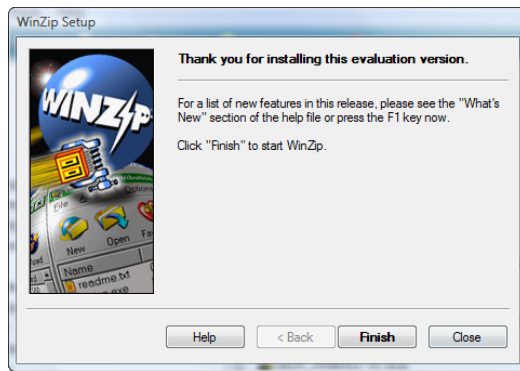
- Click [**Next >**] to continue.
- Accept the License Agreement by clicking [**Yes**].
- In the "WinZip Quick Start" window, click [**Next >**] to continue.
- In the "WinZip Setup" window, left-click the button at the left of "Start with WinZip Classic" - then click [**Next >**] to continue.



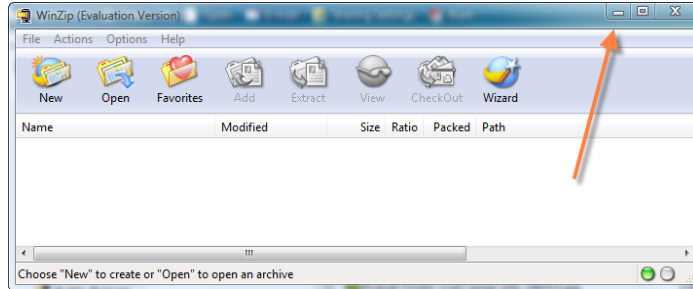
- In the next "WinZip Setup" window, click the button at left of "Express setup" (unless you are an 'advanced' computer user and have specific reasons to use the Custom setup); then click [**Next >**] to continue.



- In the next "WinZip Setup" window, click the [**Finish**] button.



- The "WinZip (Evaluation Version)" window should now open; if the "Tip of the Day" window opens, click [Close].

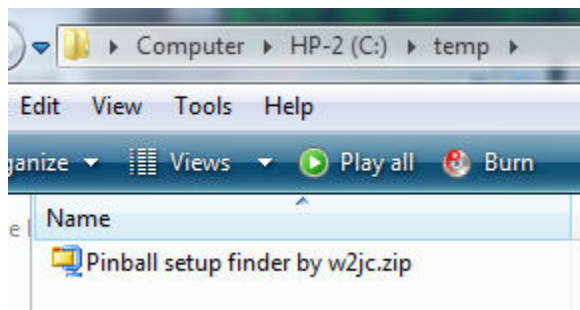


- Minimize the WinZip window by left-click on the [-] button, as shown by the arrow in the above screen shot.
- WinZip is now installed and ready to be used in the following installation of the **Pinball setup finder by w2jc**

❖ Extract files from the .ZIP archive

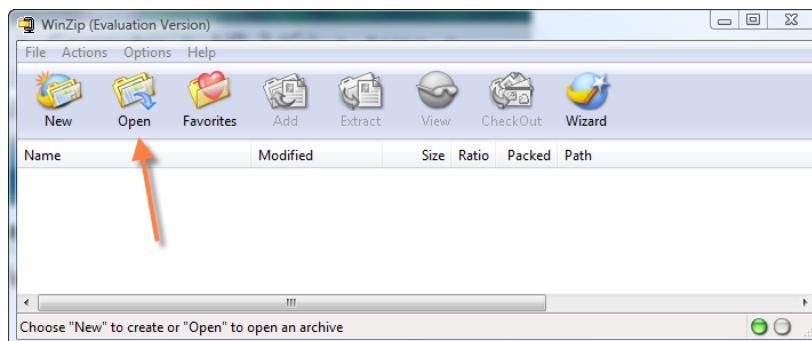
➤ Save the file **Pinball setup finder by w2jc.zip** to your hard drive

- Suggestion: save to folder **C:\temp**
- If the 'temp' folder does not exist, create it & then copy the .zip file there.

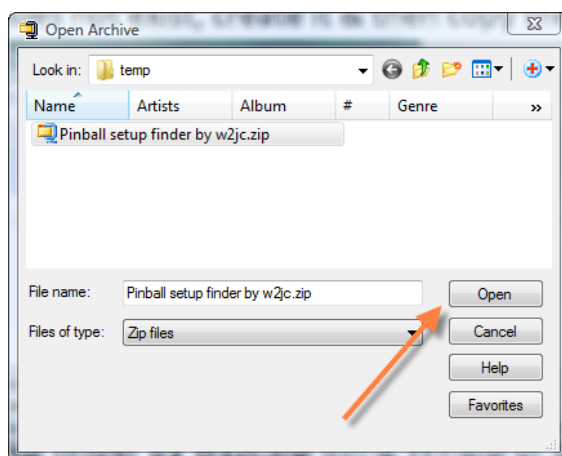


➤ Open the file **Pinball setup finder by w2jc.zip** using the WinZip program.

- In the Task Bar at the bottom of the screen, right-click the WinZip tab and select Restore or Maximize; the WinZip window should appear.

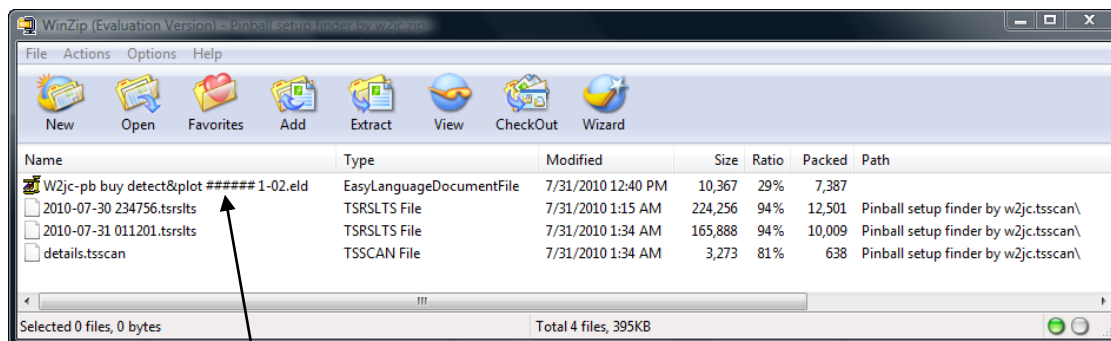


- Use the "**Open Archive**" *File Explorer* to locate **C:\temp\Pinball setup finder by w2jc.zip**



Click [**Open**] to see the files contained in the .zip archive.

- You should see four files contained within the .zip archive

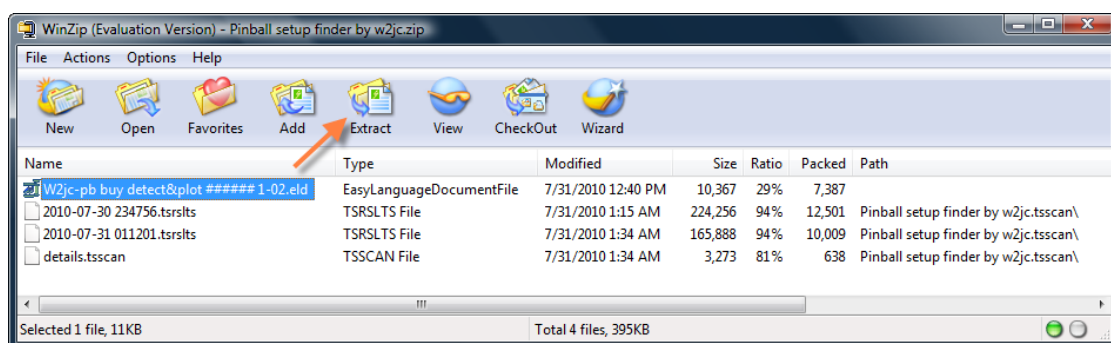


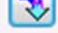
[Note: in the last file, ##### will be replaced with your TS customer ID number.]

- Left-click once (to select) on **W2JC-PB BUY DETECT&PLOT ##### 1-02.ELD**

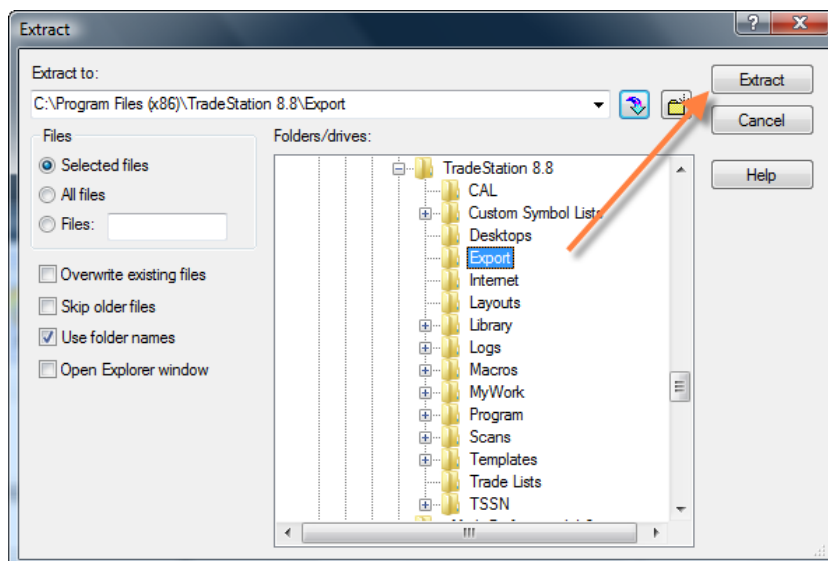
[Note: in the above file, ##### will be replaced with your TS customer ID number; and the 1-02 might be replaced with a later version number.]

- Left-click once on the **Extract** button

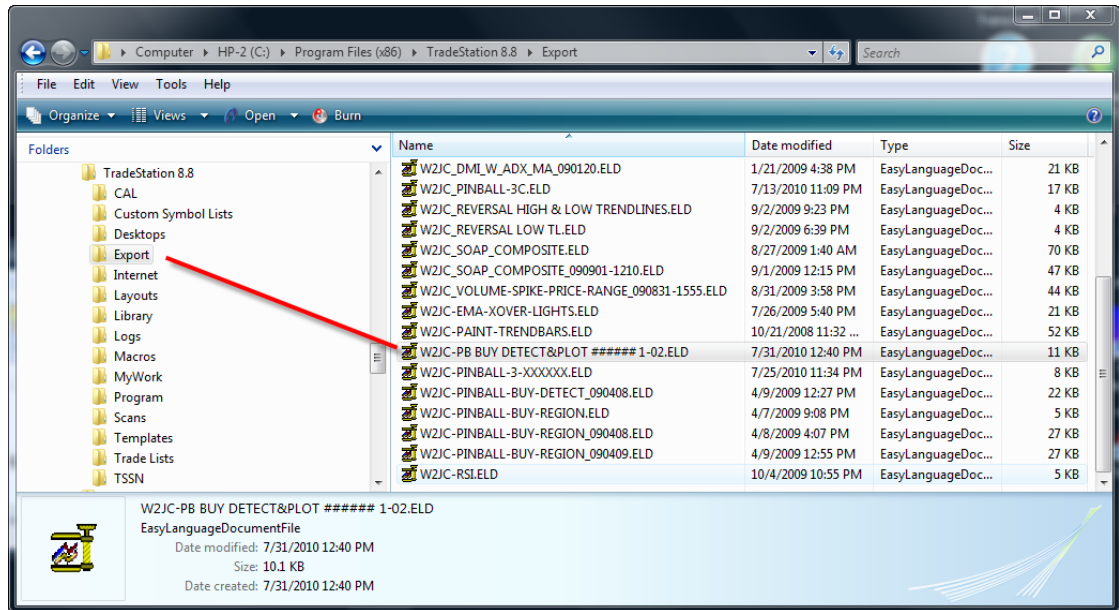


- In the "Extract" window, select the 'Browse' button  and browse to place the .eld file into the folder at: **C:\Program Files (x86)\TradeStation 8.8\Export** then click the "**Extract**" button at upper right of this window.

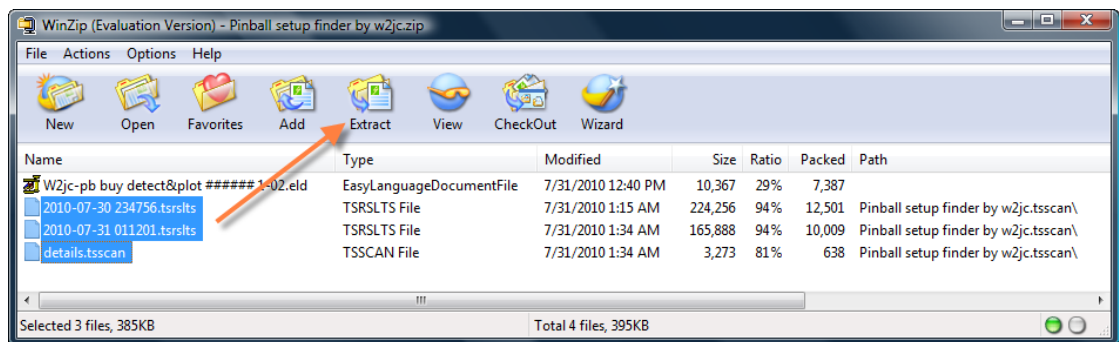
[Note: the path, TS version and Build number may differ if you have updated TS.]



- Use **File Explorer** to confirm that the file is in the \Export folder:

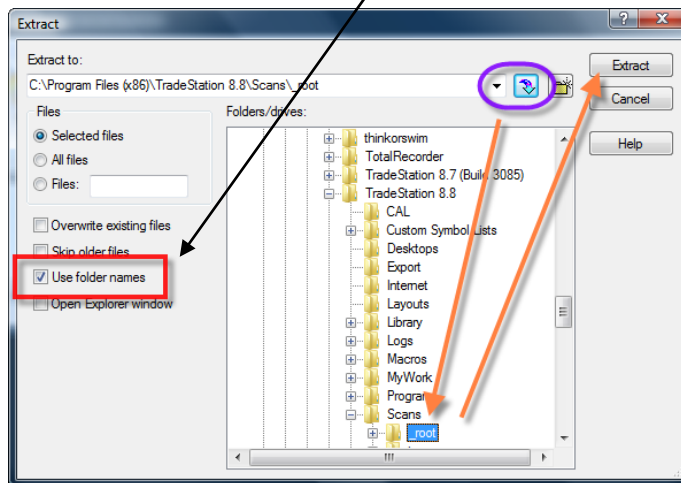


- WinZip should still be open -- return to that window and select the other three files... (left-click on the first filename, press the Ctrl key and hold down, left-click on the next two files; release the Ctrl key and left-click on the Extract button)

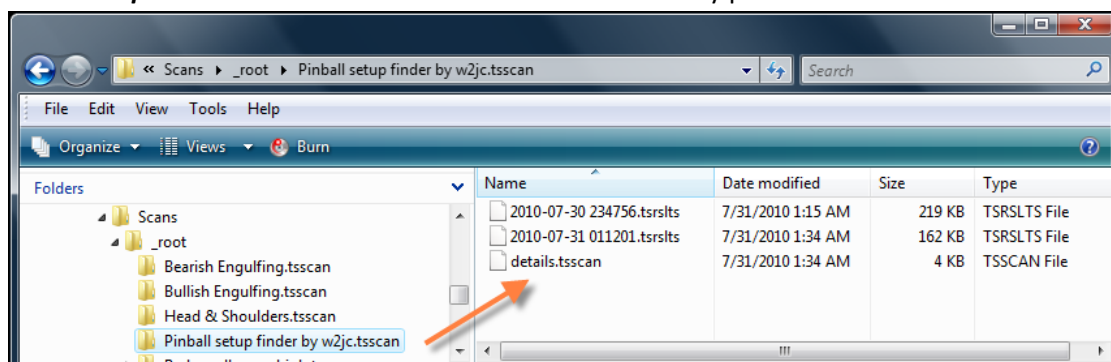


- In the "**Extract**" window, left-click once on the "**arrow down**" button (purple circle) which should return the previous path to the window; left-click on the **[+]** at left of "**Scans**" and left-click once on "**_root**" (Note: if clicking the "arrow down" button did not restore the Tradestation path, then set the **Extract to:** path to the following:
C:\Program Files (x86)\TradeStation 8.8\Scans_root).
[Note: the path, TS version and Build number may differ if you have updated TS.]

- Be sure the box at left of **Use Folder Names** is checked.



- Left-click once on the "**Extract**" button at upper right of window.
- **WinZip** should create a new sub-folder **Pinball setup finder by w2jc.tsscan** and the three selected files should now be in that sub-folder.
- Use **File Explorer** to confirm that the three files are correctly placed:

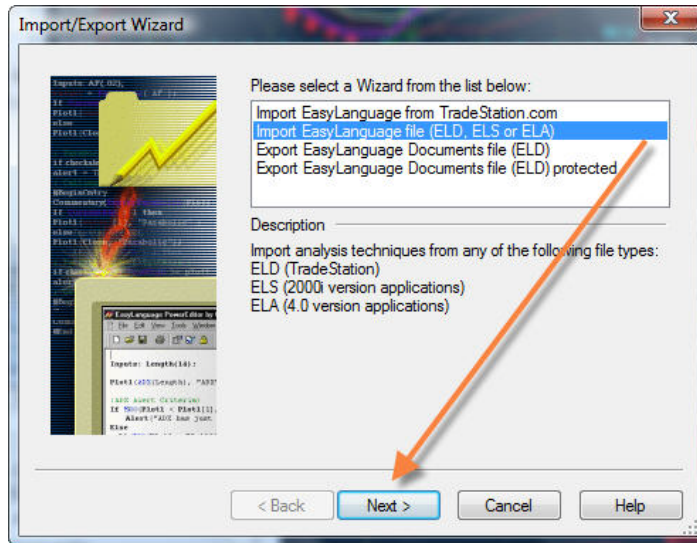


- Note: the important file here is the **details.tsscan** file; the other two files are previous scan results, as examples.
- The WinZip window should still be open; return to it, left-click **File** [upper left], left-click "**Close Archive**" then left-click **File** and **Exit** to close the window.

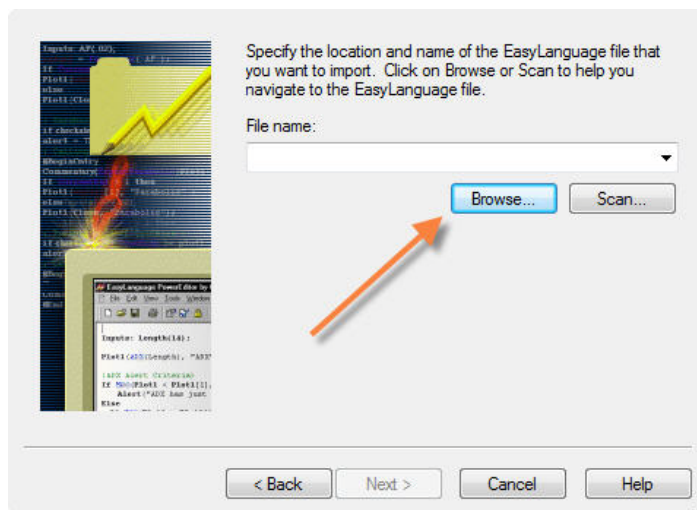
➤ **This completes the extraction of the files from the ZIP archive.**

❖ Import the .ELD code file

- With Tradestation open (in either Simulator or Real-time), left-click once on **File** at top left of window; then left-click on **Import / Export EasyLanguage**
- In the "Import/Export Wizard" window, left-click once on "Import EasyLanguage file"; then click on the "Next" button.



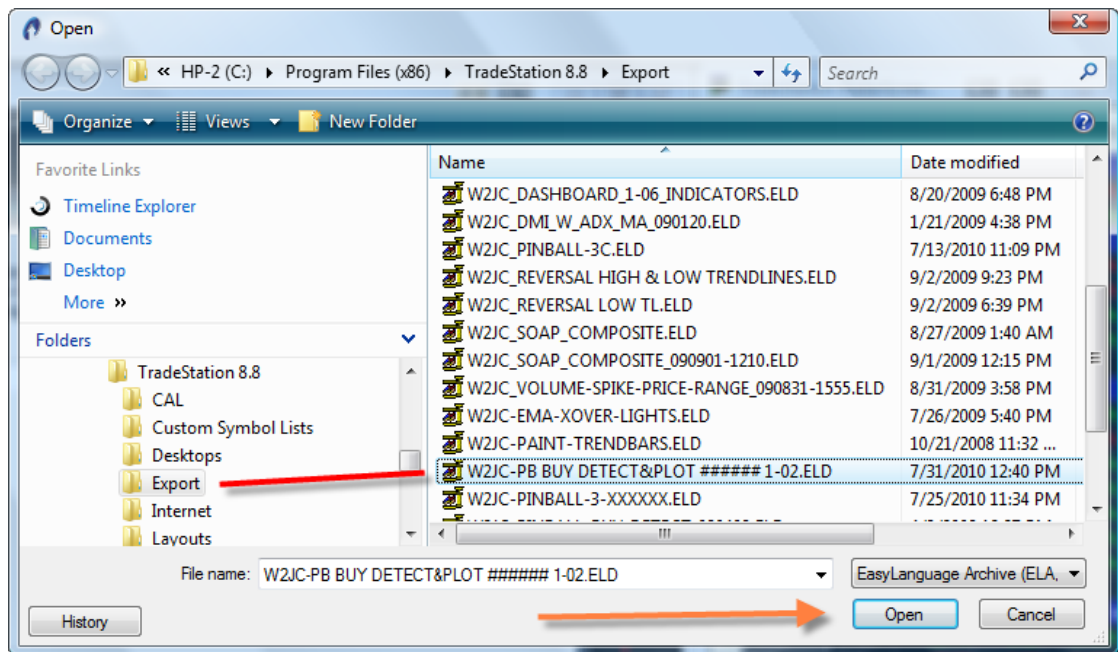
- In the "Import Wizard" window, click the **Browse** button.



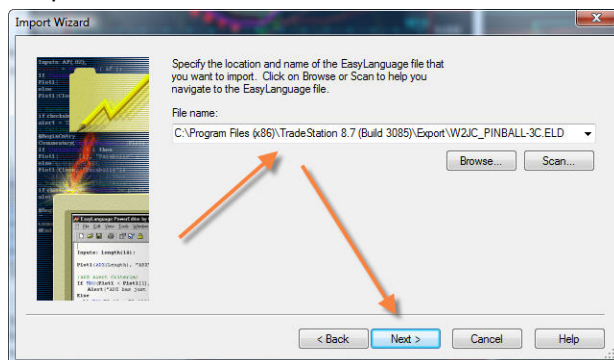
- In the "Open" window, locate the file **W2JC-PB BUY DETECT&PLOT ##### 1-02.ELD**

[Note: in the above file, ##### will be replaced with your TS customer ID number; and the 1-02 might be replaced with a later version number.]

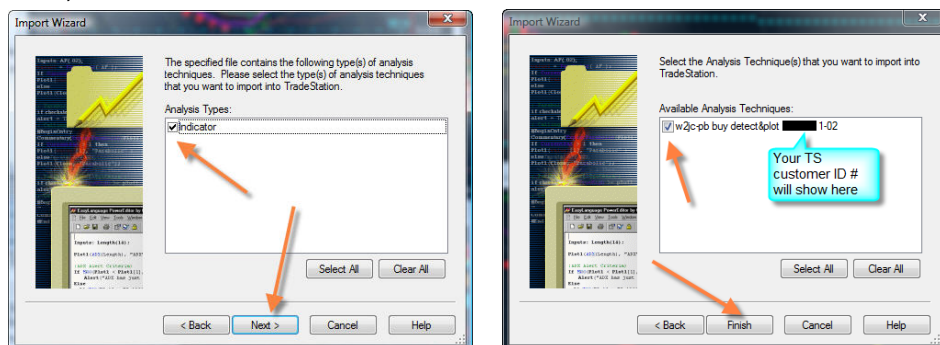
in the folder **C:\Program Files (x86)\TradeStation 8.8\Export**
and then click the **Open** button.



- In the "Import Window" the **File name:** window should now show the path to the .eld file -- left-click the **Next** button.



- In the next "Import Wizard" window, be sure the box at left of "Indicator" has a check-mark in it; if not, then left-click once in the box to create a check-mark. Then left-click the **Next** button.



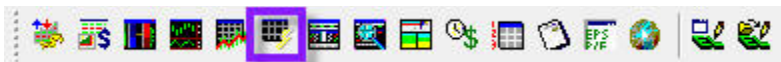
- In the next window, be sure there is a check-mark at left of the Indicator name; then click the **Finish** button.
- **This should complete the installation of the W2JC-PB BUY DETECT&PLOT indicator.**

Using the Pinball Scan

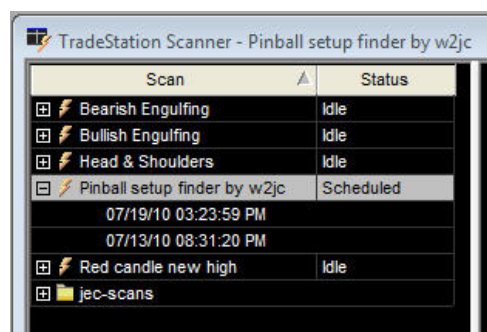
Tradestation setup

The following procedure will set up a new Workspace on your existing Desktop, into which will be placed the Scanner Control Panel. This will allow you to keep the scanner separate from the Workspace containing your charts and matrix.

- ❖ With Tradestation open, left-click **File** (at upper left of window); then click **New**; then click **Workspace**.
- ❖ On the top command line of the window, left-click on **View**; then click **Toolbars** (at bottom of pop-up)
 - Be sure there is a check-mark at the left of both "**Main**" and "**Tools & EL Shortcuts**"
 - If there is no check-mark, left-click once in the area at left of the toolbar name.
 - Left-click in the open grey area of the workspace to close the drop-down menus.
- ❖ In the "**Tools & EL Shortcuts**" toolbar, find the "New Scanner Window" button and left-click on it.



- A "Tradestation Scanner" window should open in the Workspace.
 - In the left column should be seen all the Scans that are present on your system; one of them should be the newly installed **Pinball setup finder by w2jc** scan.



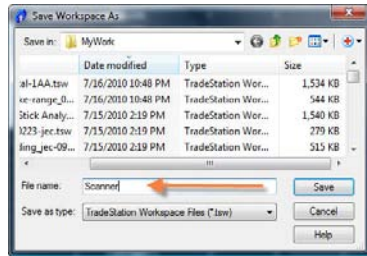
- Under the name of the scan, if the [+] box has been clicked, will be listed the results of the most recent scans. (Your new installation of this scan should show two scan results, since we installed them from the .zip file). An example of scan results is shown below:

Scan	Status	Symbol	Close	Vol (Today)	Max Avg Exp...	Max Avg Exp...	Max Avg Exp...	Max Avg Exp...	Max Avg Exp...	Max Avg Exp...	Max Avg Exp...	Max Avg Exp...	Max Avg Exp...	Max Avg Exp...	Max Avg Exp...	Max Avg Exp...	Max Avg Exp...
Bearish Engulfing	Idle	1 AIG	1	10,133,090	1	1	1	1	1	1	1	1	1	1	1	1	True
Bullish Engulfing	Idle	2 AIG	4	251,968	5	5	4	5	4	4	4	4	4	4	4	5	True
Head & Shoulders	Idle	3 AAPL	1	520,900	2	2	1	2	1	1	1	1	1	1	1	2	True
Pinball setup finder by w2jc	Scheduled	4 BARR	2	3,387,892	3	3	3	3	2	3	2	3	2	3	3	3	True
		5 CNAM	3	725,268	4	4	3	4	3	3	3	3	3	3	4	3	True
		6 COCO	10	2,502,099	11	12	10	11	10	10	10	10	10	10	11	10	True
		7 CRIS	2	405,136	2	2	2	2	2	2	1	2	1	2	1	2	True
		8 CWTR	4	957,348	4	5	4	4	4	4	4	4	4	4	4	4	True
		9 DUTH	7	2,815,914	9	9	8	9	7	8	7	7	9	7	7	9	True
		10 FBC	4	1,805,321	4	4	4	4	3	4	3	3	3	4	3	True	True
		11 FCEL	1	2,458,805	2	2	1	2	1	1	1	1	1	1	2	1	True
		12 DGC	13	298,429	15	16	14	15	13	14	13	13	13	13	15	13	True

- Note:
You can select the tickers in the **Symbol** column (place mouse over top ticker, press and hold left mouse button, drag down to last ticker in column and release the left button), Copy (**Ctrl C**) and then Paste (**Ctrl V**) them into the Symbol column of a **Radar Screen** (in any open Workspace).

Also, the default setup for this scan creates a *Custom Symbol List* called "**Pinball_setup_now**" which can be used anywhere a symbol list is used.

- At the bottom of the Workspace window will be Tabs for each Workspace you have open; find the one labeled "**Untitled Workspace**" and right-click on it. From the pop-up menu, select "**Save Workspace As**" and in the **File name:** window of the pop-up enter **Scanner** and then click on the Save button.

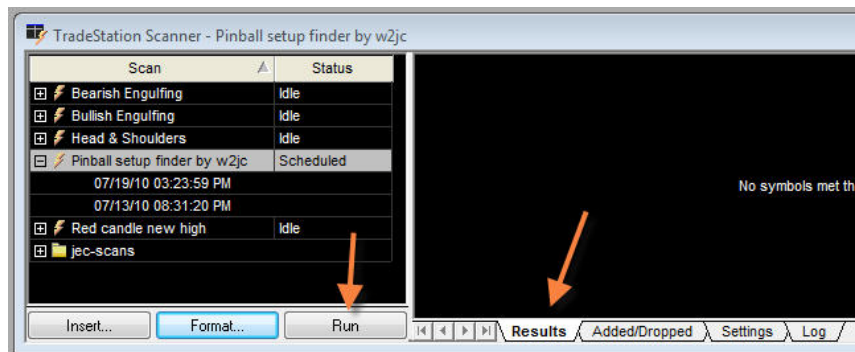


- You can now open the Workspace "Scanner" any time you want to work with the Scans.

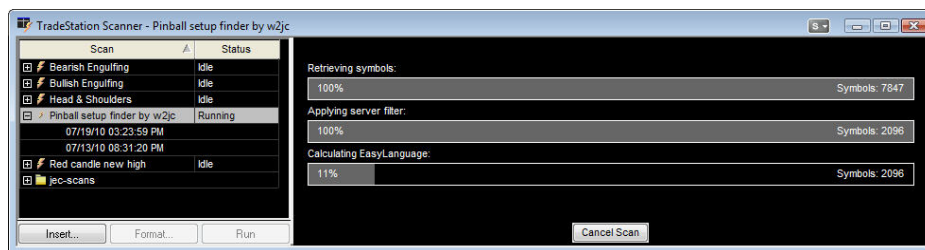
Scanning with the Pinball setup finder by w2jc scan

To use your new scan, simply open the "Scanner" workspace
(click File, Open Workspace, and select the Scanner workspace from the file list)
and then left-click once on **Pinball setup finder by w2jc** to select that scan.

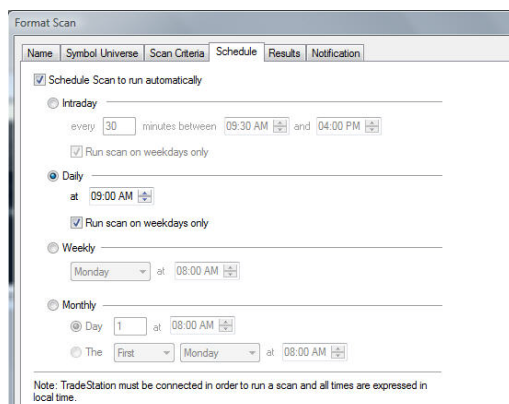
At the bottom of the right side of the "Tradestation Scanner" window,
be sure that the "Results" tab has been selected;
if it has not, the left-click once on the tab to select it.



To run the scan once, simply click on the "Run" button (see above). As the scan runs you will see the progress:



If you want to have the scan run "automatically" you can set up a schedule by clicking on the "Format" tab
(see above) and then the "Schedule" tab, then select your desired settings.



Specific settings for Pinball setup finder by w2jc

Default Settings

As shown above, the **Pinball setup finder by w2jc** should show in the list of scans.

There are several "variables" which can be set by the user to change the operation of the scan; these can be accessed by clicking on the [Format] button at the bottom of the list of scans.

Symbol Universe

- The default setting is "all stocks."

Scan Criteria

The user is cautioned about making any changes to the settings in this section; they have been selected for optimum functioning of this particular scan.

Format Scan

Name Symbol Universe Scan Criteria Schedule Results Notification

Select the criteria to use in the scan:

	Field	Operator	Field/Value	
<input checked="" type="checkbox"/>	Close	Between	0.35 100	X
	Sort key	<none>		
	<input type="checkbox"/> Ignore this scan criterion for symbols that do not have a valid value			
<input checked="" type="checkbox"/>	Vol (Today)	>=	250000	X
	Sort key	<none>		
	<input type="checkbox"/> Ignore this scan criterion for symbols that do not have a valid value			
<input checked="" type="checkbox"/>	Mov Avg Exponential	AvgExp	<	Mov Avg Exponential AvgExp X
	Input/Setting Name	Value		
	Price	Close		
	Length	34		
	Displace	0		
	Interval	Daily		
	Max # bars to reference	Auto-detect		
	Load additional data	200		
	Currency based on	Account		
	Sort key	<none>		
	<input type="checkbox"/> Ignore this scan criterion for symbols that do not have a valid value			
<input checked="" type="checkbox"/>	Mov Avg Exponential	AvgExp	<	Mov Avg Exponential AvgExp X
	Input/Setting Name	Value		
	Price	Close		
	Length	21		
	Displace	0		
	Interval	Daily		
	Max # bars to reference	Auto-detect		
	Load additional data	200		
	Currency based on	Account		
	Sort key	<none>		
	<input type="checkbox"/> Ignore this scan criterion for symbols that do not have a valid value			
<input checked="" type="checkbox"/>	Mov Avg Exponential	AvgExp	<	Mov Avg Exponential AvgExp X
<input checked="" type="checkbox"/>	Mov Avg Exponential	AvgExp	<	Mov Avg Exponential AvgExp X
<input checked="" type="checkbox"/>	Mov Avg Exponential	AvgExp	<=	Mov Avg Exponential AvgExp X
<input checked="" type="checkbox"/>	Mov Avg Exponential	AvgExp	<=	Close X
<input checked="" type="checkbox"/>	w2jc-pb buy detect&plot	Alert	True	X
	<Select Criteria>			

Format Scan

Name Symbol Universe Scan Criteria Schedule Results Notification

Select the criteria to use in the scan:

	Field	Operator	Field/Value
<input checked="" type="checkbox"/>	Mov Avg Exponential	<	Mov Avg Exponential
	Input/Setting Name		Input/Setting Name
	Value		Value
	Price		Price
	Length		Length
	Displace		Displace
	Interval		Interval
	Max # bars to reference		Max # bars to reference
	Load additional data		Load additional data
	Currency based on		Currency based on
	Sort key		Sort key
	<input type="checkbox"/> Ignore this scan criterion for symbols that do not have a valid value		
<input checked="" type="checkbox"/>	Mov Avg Exponential	<	Mov Avg Exponential
	Input/Setting Name		Input/Setting Name
	Value		Value
	Price		Price
	Length		Length
	Displace		Displace
	Interval		Interval
	Max # bars to reference		Max # bars to reference
	Load additional data		Load additional data
	Currency based on		Currency based on
	Sort key		Sort key
	<input type="checkbox"/> Ignore this scan criterion for symbols that do not have a valid value		
<input checked="" type="checkbox"/>	Mov Avg Exponential	<=	Mov Avg Exponential
	Input/Setting Name		Input/Setting Name
	Value		Value
	Price		Price
	Length		Length
	Displace		Displace
	Interval		Interval
	Max # bars to reference		Max # bars to reference
	Load additional data		Load additional data
	Currency based on		Currency based on
	Sort key		Sort key
	<input type="checkbox"/> Ignore this scan criterion for symbols that do not have a valid value		
<input checked="" type="checkbox"/>	Mov Avg Exponential	<=	Close
	Input/Setting Name		
	Value		
	Price		
	Length		
	Displace		
	Interval		
	Max # bars to reference		
	Load additional data		
	Currency based on		
	Sort key		Sort key
	<input type="checkbox"/> Ignore this scan criterion for symbols that do not have a valid value		
<input checked="" type="checkbox"/>	w2jc-pb buy detect&plot	Alert	True

All of the above create filters for the relationships between the various moving averages, as specified by the Hit&RunCandlesticks criteria. Note that ALL criteria require the "Load additional data" to be set for 200.

Input/Setting Name	Value	Alert	True
TLine	8		
UpBuyMA	13		
TXT	"Pinball buy"		
ProfitSpreadPct	10		
PriceH	Close		
PriceL	Close		
FillWidth_1to6	5		
BandColor	darkmagenta		
Interval	Daily		
Max # bars to reference	Auto-detect		
Load additional data	200		
Currency based on	Account		
Sort key	<none>		
<input type="checkbox"/> Ignore this scan criterion for symbols that do not have a valid value			
<Select Criteria>			

The last set of settings control the EZ-Language logic which is the "heart" of the **Pinball setup finder by w2jc**. Generally, these should not be changed; however, there are a couple of settings that can be "user selected." (Some of the settings shown in the list do not relate to the scanner; they are used when the same EZ-Language code is used as an indicator on charts.)

User Adjustable Settings

The only settings we recommend the user change, if any, are those shown on this page.

- TLine 8 (ema) do not change.
- UpBuyMA this is the upper buy limit price during Pinball
it is set for 13ema, but could be changed to 11ema
- TXT not applicable to scanner
- ProfitSpreadPct default is 10%. This is the percent gain available
from the TLine to the 34ema; if too many hits found
by the scan, increase to 15, if too few hits, lower it.
- PriceH not applicable to scanner
- PriceL not applicable to scanner
- FillWidth_1to6 not applicable to scanner
- BandColor not applicable to scanner
- Interval leave at Daily
- Max # bars to reference leave at Auto-detect
- Load additional data must be set at 200
- Currency based on leave at Account
- Sort key leave at <none>

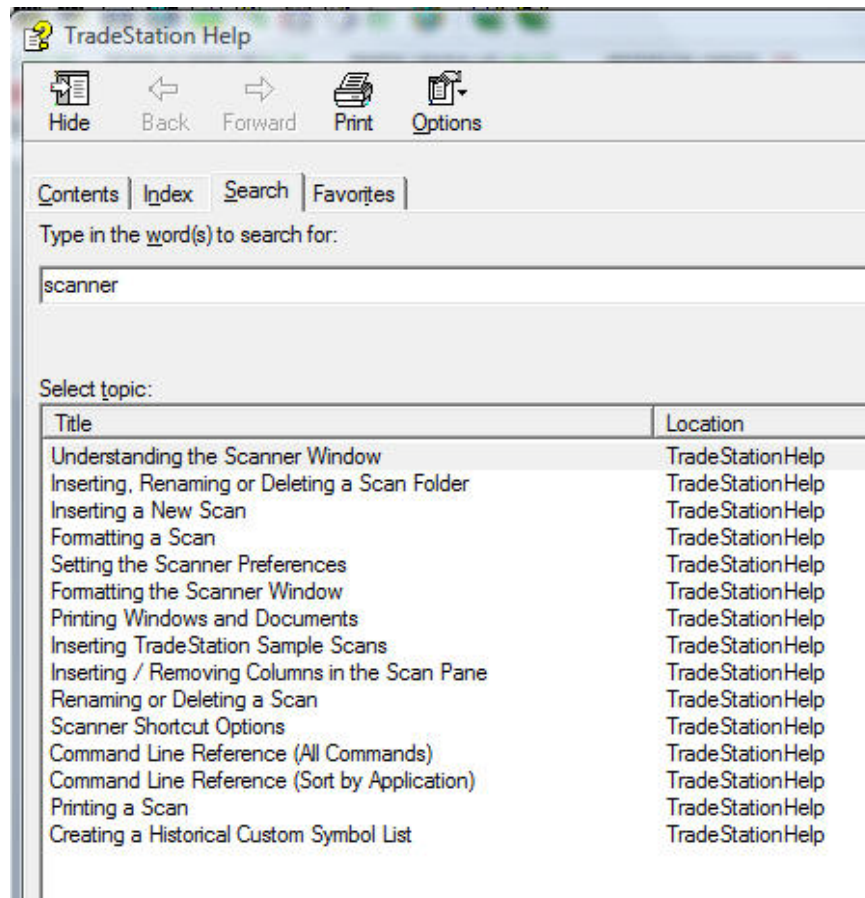
These settings will be reviewed again in the section covering the use of this EZ-Language code as a chart indicator.

Other scanning settings and operation

It is beyond the scope of this document to cover standard Tradestation procedures.

However, much tutorial information is available from Tradestation regarding the built-in features of the Tradestation Scanner utility. Some references are shown below for your convenience.

By clicking the Help button on the top line of the Tradestation window, and searching for "scanner" a number of useful instructions are found:



On-line, you can view the following tutorial at <https://www.tradestation.com/support/webinars/default.aspx>

Session 3

Register Now

Getting Started with Scanner, RadarScreen, Hot Lists, Time & Sales and News

Here you'll discover the power of TradeStation scanning tools such as RadarScreen, Scanner and Hot Lists. You'll create scans to find symbols that meet your custom criteria, based on both fundamental and technical data. You'll also learn how to use the Time & Sales window to track market data and the News window to keep abreast of the latest company, industry and market news.

Class Objectives

- Scan the universe of symbols based on market data, fundamental data and technical indicators.
- Create and schedule custom scans.
- Use RadarScreen to monitor and sort hundreds of symbols based on real-time technical analysis and to trigger realtime indicator alerts.
- Use the Hot Lists window to quickly filter stocks, index options, and stock options based on pre-defined criteria.
- View a chronological list of trades, bids and asks in the Time & Sales window.
- Retrieve news articles using custom filters based on symbols, keywords or headlines.
- Create window links to change the symbol in multiple windows simultaneously.

Also on-line, at

https://www.tradestation.com/support/webinars/archives/screen_size.asp?id=Scanner_RadarScreen_and_Hot_Lists_Integration

Scanner, RadarScreen and Hot Lists Integration

TradeStation Scanner, Hot Lists and RadarScreen provide a variety of ways to search, sort and monitor lists of symbols. Scanner for broad market scans on fundamental and technical data, RadarScreen for real-time technical analysis in a tabular format, and Hot Lists for quick and automatic scans all complement each other in helping you find and monitor trading opportunities. This online seminar will focus on integrating the features of these three tools for quick and efficient analysis and trading.

Some additional links are shown below:

http://www.tradestation.com/strategy_testing/st_scanner.shtm

Finding Pinball Conditions on TradeStation charts

Version 1.02 and later of the EZ-Language code for **W2JC-PB BUY DETECT&PLOT ##### 1-02.ELD** has been enhanced to allow the same code module to be used as a "chart indicator" as well as the scanner.

The code detects "Pinball Buy" conditions and overlays a wide, vertical bar on the candle meeting the required conditions. The price range inside this indicator bar is the "buy range" recommended by Rick Saddler, the creator of the Pinball Play. Below is an example chart showing two occurrences meeting the Pinball criteria.

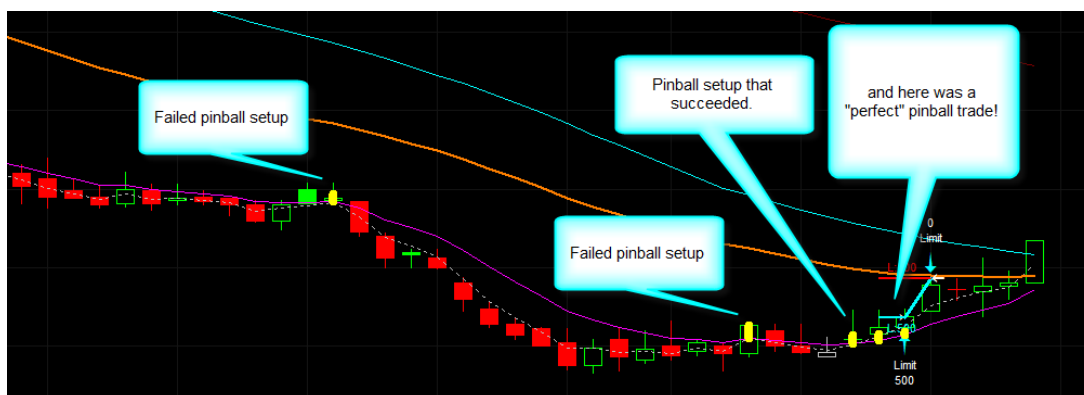


The three yellow, vertical bars indicate the three candles during which the Pinball Buy conditions were present. Notice that there are two candles between, where the first Pinball "failed" and later the conditions were again met, creating a new Pinball Buy signal. The bottom of the yellow vertical bar is always at the T-Line (8ema); the top of the vertical bar is user-adjustable, but by default is at the 13ema.

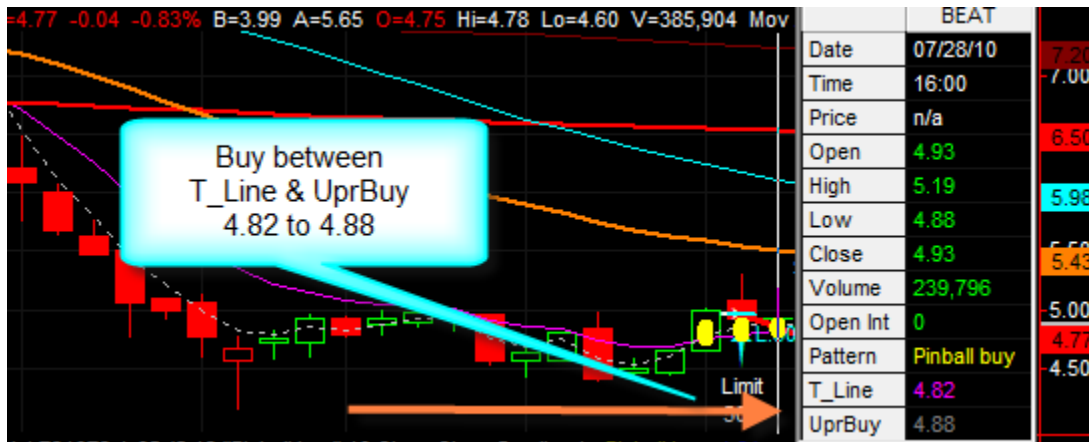
Note: this chart also has an example of "Bracket Order" suitable for this pinball setup. The blue L:1000 is at the top of the vertical bar; a "target sell" order is placed just under the orange 34ema and a "stop market" order is placed below the previous candle's low (placement of the stop price is based on the user's money management and risk tolerance).

An "alert" is included in the coding of this indicator. If the current bar of the chart meets the Pinball Buy criteria, the alert will be triggered. Depending on user settings, the alert can be a pop-up and/or an audible (voice) announcement. Special code has been included so that the alert identifies the ticker symbol. An example alert would be: "XXXX is now in Pinball Buy area."

The vertical bar overlays remain on past candles/bars of the chart, so that it is easy to view a chart and see when in the past the pinball setup has occurred. This is particularly useful to see if previous Pinball setups have been prone to fail, or succeed.



An additional feature of this indicator is that when the "data box" is displayed for a certain bar/candle, the Pinball Buy Range values are displayed in the chart, making it very easy to determine where you should place your buy order.



Here are some example charts, showing previous Pinball Buy conditions -- both failed and successful.

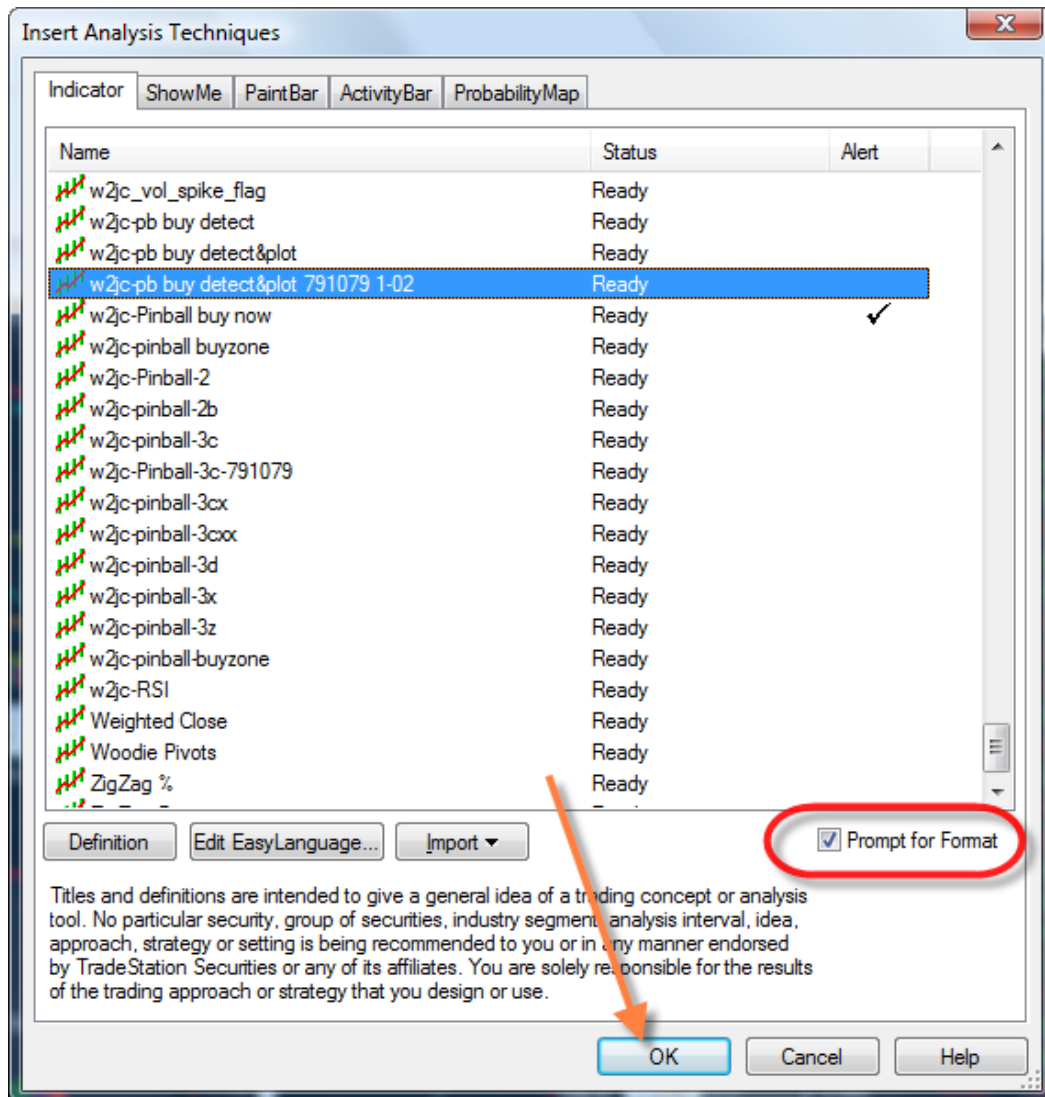




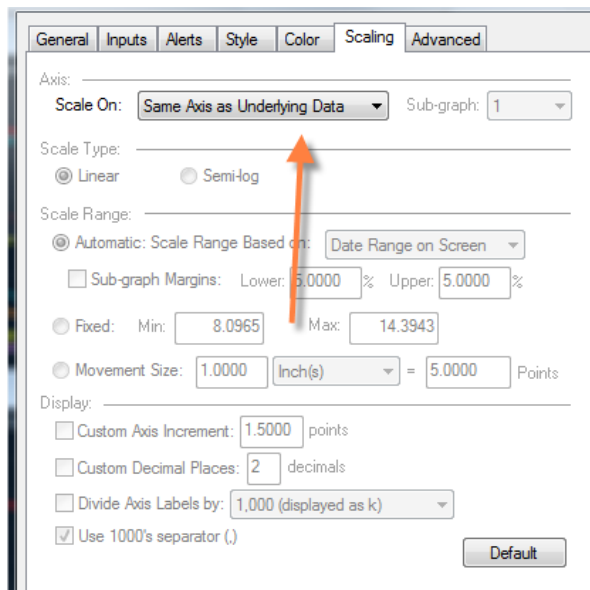
Installing the W2JC-PB BUY DETECT&PLOT Indicator on a chart

If you installed the **W2JC-PB BUY DETECT&PLOT ##### 1-02.ELD** previously, then you already have the code for this indicator installed and ready to select. It is added to TradeStation chart the same way any other indicator is added to the chart.

- In the chart area of the chart window, right-click and from the menu window select "Insert Analysis Technique"
- In the "Insert Analysis Techniques" window, be sure the "Indicator" tab is selected.
- Scroll down the list of Indicators and find the entry for **w2jc-pb buy detect&plot ##### 1-02** [##### should be your Customer ID; 1-02 is version]
- Left-click once to select the indicator name.
- Be sure the box at left of "Prompt for Format" has a checkmark in it.



- Left-click the [OK] button to continue.
- The "Format Indicator" window should appear; select the "Scaling" tab.
[Settings in this tab are very important to proper operation of the indicator.]

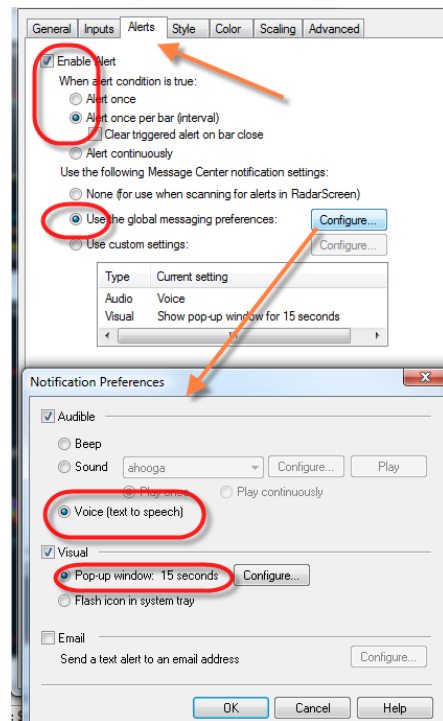


This setting is very important, as it puts the indicator in the top section of the chart and associates it with the candles.

- In the **Axis: / Scale On:** drop-down menu, select "**Same Axis as Underlying Data**" (everything else on the menu should become greyed-out).
- The **Color**, **Style** and **General** tabs are not relevant to this indicator.

Click on the **Alerts** tab and, in the menu, select:

- Enable **Alert**
- Alert **once per bar**
- Use **global messaging** preferences
- Click the **[Configure]** button to set Notification Preferences
 - ◆ Select **Audible**
 - ◆ Select "**Voice (text to speech)**" [so the alert message is read to you!]
 - ◆ Select **Visual**
 - ◆ Select **Pop-up window** (use Configure if you don't want 15 seconds)
 - ◆ Click **[OK]** button to return to the Alert tab menu



- Click on the **Inputs** tab

Name	Value
TLine	8
UpBuyMA	13
TXT	"Pinball buy"
ProfitSpreadPct	10
PriceH	Close
PriceL	Close
FillWidth_1to6	5
BandColor	yellow

The table above shows the default settings for this indicator.

User Adjustable Settings

The only settings we recommend the user change, if any, are those shown on this page.

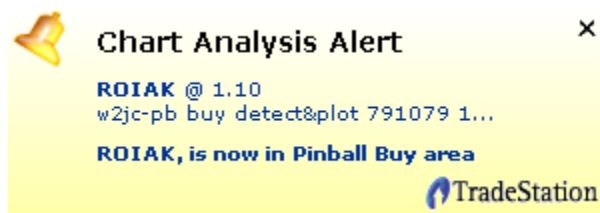
- TLine 8 (ema) do not change.
- UpBuyMA this is the upper buy limit price during Pinball it is set for 13ema, but could be changed to 11ema
- TXT this is the 'title' that shows in the data box.
- ProfitSpreadPct default is 10%. This is the percent gain available from the TLine to the 34ema; if too many hits found by the scan, increase to 15, if too few hits, lower it.
- PriceH not applicable; do not change.
- PriceL not applicable; do not change.
- FillWidth_1to6 this sets the thickness of the vertical overlay bar.
- BandColor this sets the color of the vertical overlay bar.

When the Inputs are set as desired, click the [OK] button at bottom of "**Format Indicator**" window.

The **Pinball Buy Area** indicator should now be installed on the chart.

If you do not see any yellow vertical bars on the current daily chart, return to the Scanner workspace and run the **Pinball setup finder by w2jc** to find tickers that are currently Pinball Buy candidates.

When you open a chart from the Scan Results list, if everything is working correctly, you should see a pop-up alert window



and you should hear the lower line spoken audibly:

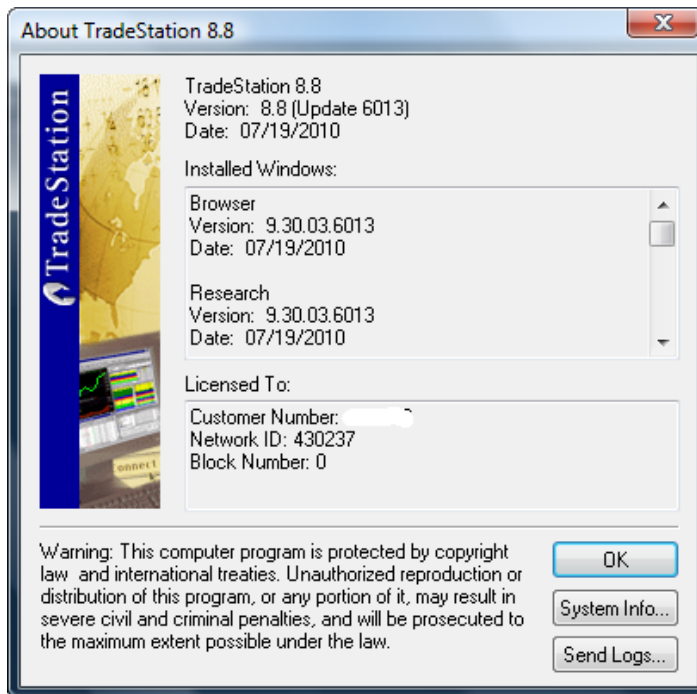
" R O I A K [pause] is now in Pinball Buy area"

You are now prepared to scan and find Pinball setups, and then to place your Bracket Orders and then follow the progress on the chart!

Ordering Information

The **Pinball setup finder by w2jc** is a proprietary software package developed by Jim Cooper, w2jc. (w2jc is my Amateur Radio Extra Class call letters!)

This package is applicable only with the Tradestation charting program, Version 8.7 or later. Because there is no "registration" procedure for this package, it is internally coded with your Tradestation "Customer ID" number. To find your ID number, while Tradestation is running click Help / About Tradestation and you will see the Customer Number listed near the bottom:



The **Pinball setup finder by w2jc** package can be purchased for only \$150 from the following link:

<http://jimcooper.biz/stockcharts/index.html#pinball>

PLEASE NOTE:

When ordering from the website, when you get to the PayPal order form page please look carefully for the link "**Enter Tradestation Customer ID here**" and click the link to open the text window, into which you can type your ID number.

This is important because if we don't get that info with order, it will delay while we contact you for the info before creating your software package.

All future updates are included in the one-time fee for this scanner/indicator package.

Note: TradeStation and EZ-Language are trademarks of TradeStation Securities, Inc.